

PLASTIC MOLDED PRODUCTS

- **NYLON** (NYLON 66 & CAST NYLON)

Nylon was the first commercially successful synthetic thermoplastic polymer.

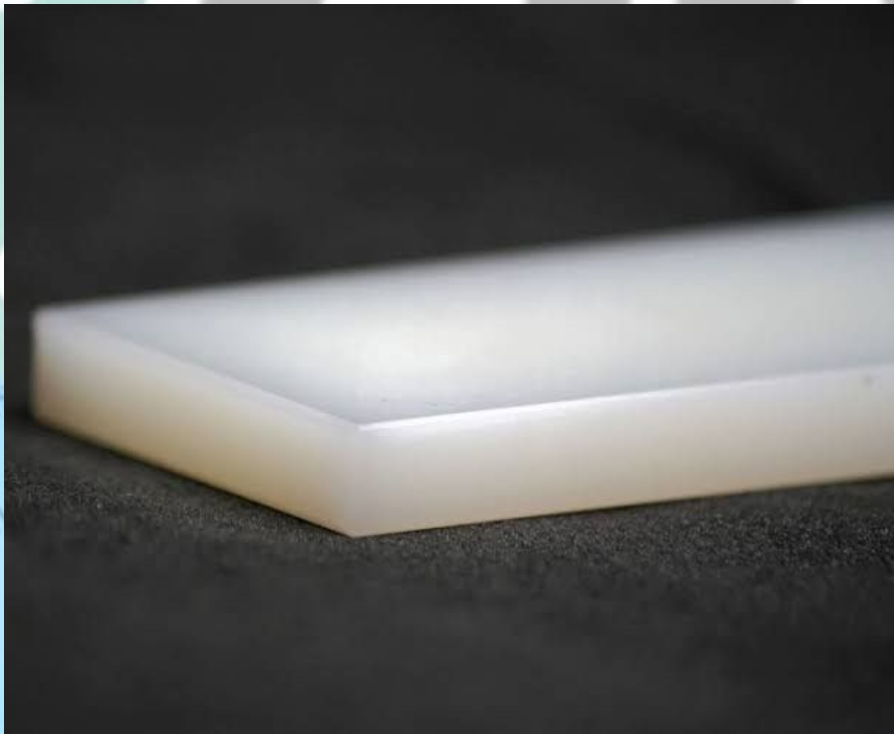
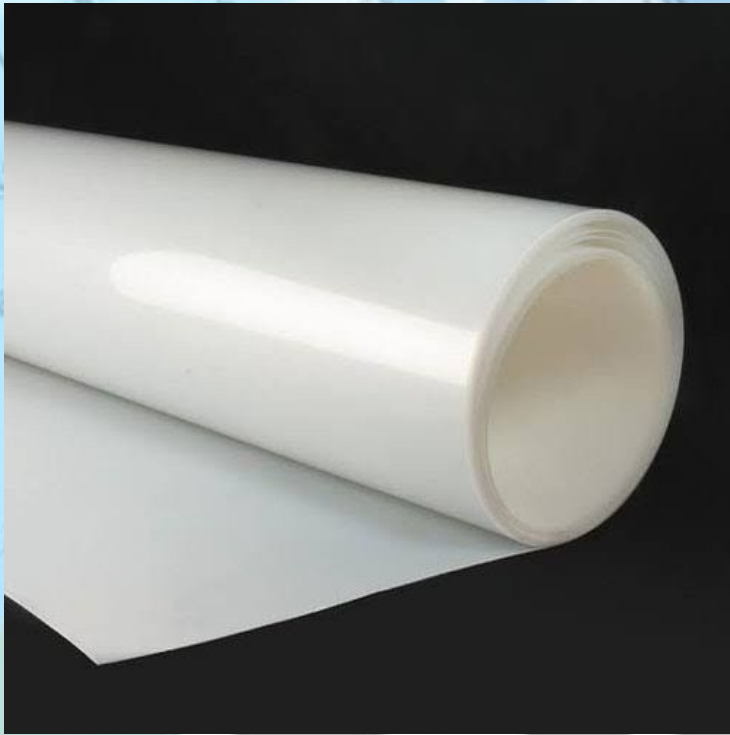
It is a thermoplastic silky material that can be melt-processed into fibers, films, or shapes.

Nylon polymers can be mixed with a wide variety of additives to achieve many different property variations. They have some excellent physical and mechanical properties some of the outstanding characteristics are; lighter in weight, self lubricating, economical, shock resistant, vibration damping performance, temperature resistant, high tensile & compressive strengths and easy to machine. Nylon is mainly produced in either natural color or black color. Black nylon contains Molybdenum disulphide (commonly known as MOS₂), which can help with self lubrication in obscure areas and also can look aesthetically better In dirty environments. Our superior Nylon products are manufactured through high-tech extruding and cast process. Rods, Sheets, Tubing, Bushes & Machined Nylon Parts. Rod, Bushes Sheets and Parts from Polyurethane, paper base and fabric base , Fibre Sheets Gear from Fibre Sheet.

Application

Some commercial applications of Nylon which are used In industries are Textile, Automobile, Paper & Sugar Mills, Bottling & Foods processors, Engineering and chemical, and marine. A huge and varied amount of components are made and some of them, are Bushes, Bearing slide plates, Gears, Gear Racks, wear Plates, washers, sleeper Pads for Rolling Mills, Liners, Wheels, Sleeves, Pulleys, Ropeways, Tyre, Eccentric Rollers, Loom Pivot Bearings, Throttle Linkages, Shackle Pin Bushes, Timing Screws &, Nut Bolts.

- **Sheet**



● Rod



- **Bush**





We can manufacture bespoke plastic moulded components and parts using our high specification modern moulding machines for a wide range of industrial applications.

- PVC
- HDPE
- LDPE
- DELTRIN / ACETAL





If you can't find what you are looking for, or require a bespoke product, please do not hesitate to contact us.

We will manufacture as per the specifications, drawing or sample provided by you .

Customer Service

We are happy to answer any questions that you might have about this product. Please contact us for more information.

Delivery / Shipping

Orders are processed as quickly as possible. Please allow a few days for delivery of your order.

International deliveries can be arranged for you. Additional shipping costs can be quoted on request.

Returns Policy

While every effort will be made to fulfil your order correctly, if for any reason you do not receive the correct goods then please contact us and we will be happy to correct your orders.

